

MANUAL
Peak Fitness M10



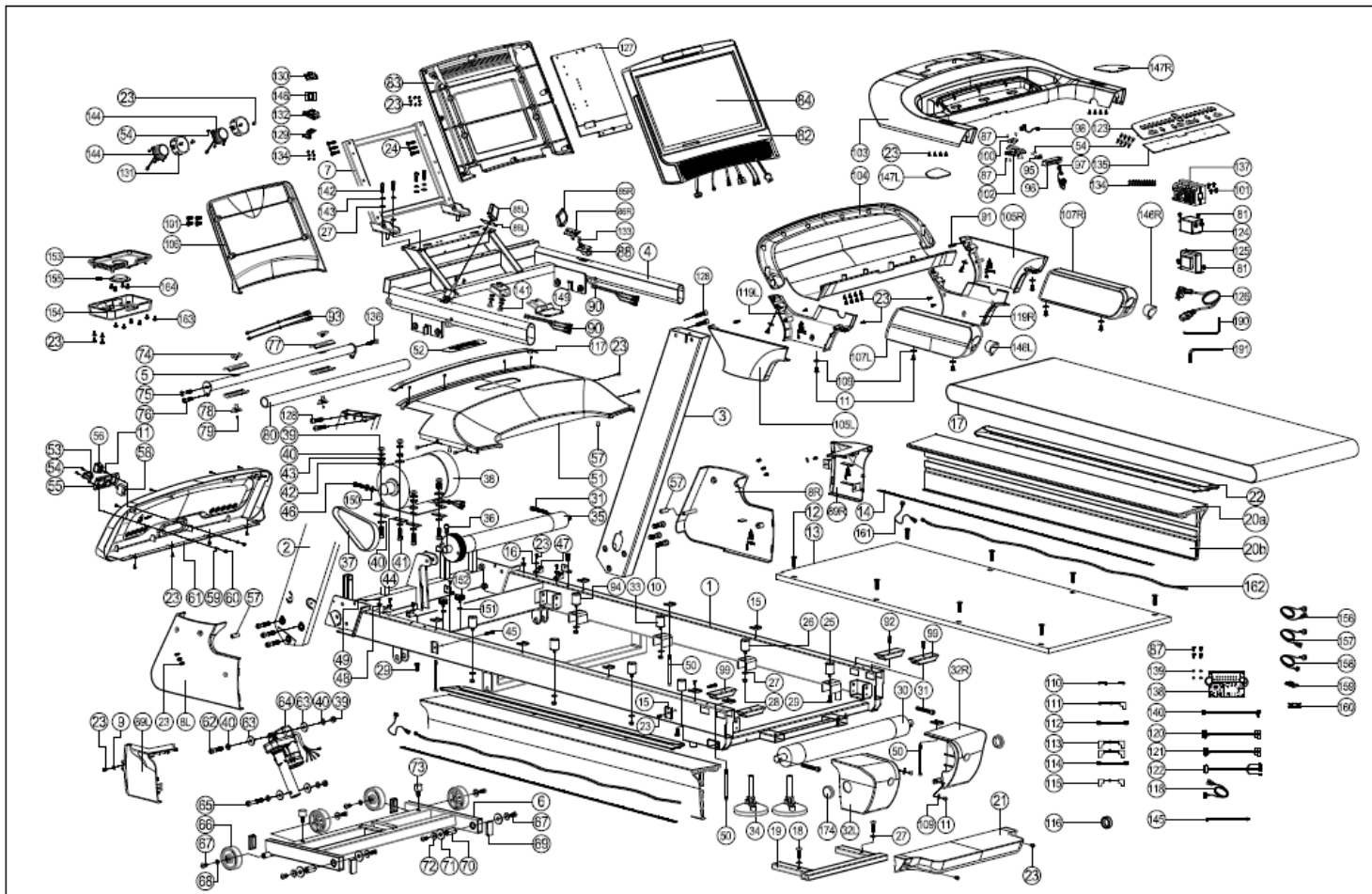
Peak Fitness

Safety Instructions

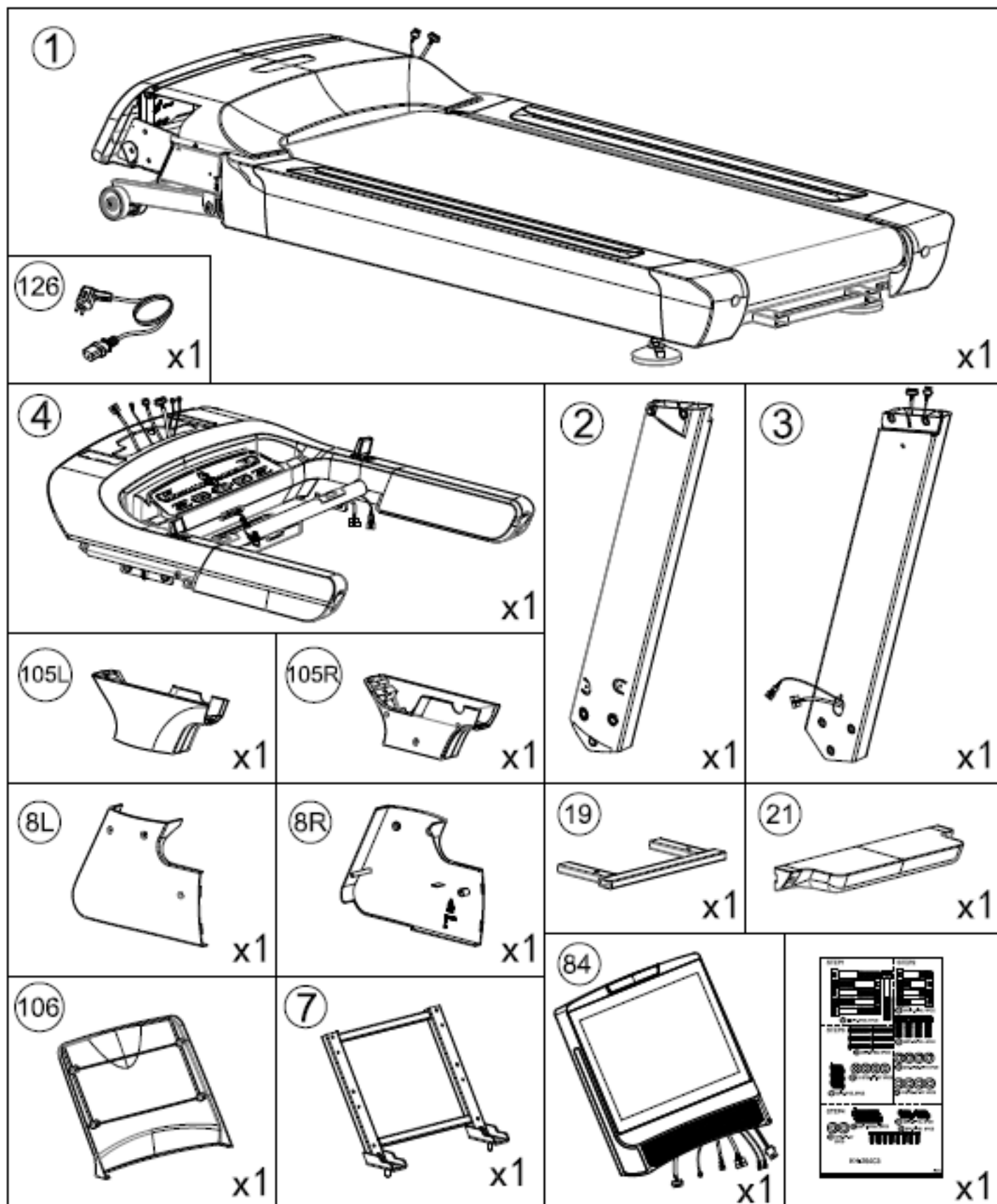


- To ensure the best safety of the exerciser, regularly check it for damage and worn parts.
- If you pass on this exerciser to another person or if you allow another person to use it, make sure that that person is familiar with the content and instructions in these instructions.
- Only one person should use the exerciser at a time.
- Before the first use and regularly make sure that all screws, bolts and other joints are properly tightened and firmly seated.
- Before you start your work-out, remove all sharp-edged objects around the exerciser.
- Only use the exercise for your work-out if it works flawlessly.
- Any broken, worn or defective part must immediately be replaced and/or the exerciser must no longer be used until it has been properly maintained and repaired.
- Parents and other supervisory persons should be aware of their responsibility, due to situations which may arise for which the exerciser has not been designed and which may occur due to children's natural play instinct and interest in experimenting.
- If you do allow children to use this exerciser, be sure to take into consideration and assess their mental and physical condition and development, and above all their temperament. Children should use the exerciser only under adult supervision and be instructed on the correct and proper use of the exerciser. The exerciser is not a toy.
- Make sure there is sufficient free space around the exerciser when you set it up.
- To avoid possible accidents, do not allow children to approach the exerciser without supervision, since they may use it in a way for which it is not intended due to their natural play instinct and interest in experimenting may place them at risk .
- Please note that an improper and excessive work-out may be harmful to your health.
- Please note that levers and other adjustment mechanisms are not projecting into the area of movement during the work-out.
- When setting up the exerciser, please make sure that the exerciser is standing in a stable way and that any possible unevenness of the floor is evened out.
- Always wear appropriate clothing and shoes which are suitable for your work-out on the exerciser. The clothes must be designed in a way so that they will not get caught in any part of the exerciser during the work-out (for example, length). Be sure to wear appropriate shoes which are suitable for the work-out, firmly support the feet and which are provided with a non-slip sole.
- Be sure to consult a physician or exercise professional before you start any exercise program. He may give you proper hints and advice with respect to the individual intensity of stress for your work-out and sensible eating habits.
- Be sure to set up the exerciser in a dry and even place and always protect it from humidity. If you wish to protect the floor particularly against pressure points, contamination, etc. it is recommended to put a suitable, non-slip mat under the exercise
- The general rule is that exercisers and training devices are not toys. Therefore, they must only be used by properly informed or instructed persons
- Stop your work-out immediately in case of dizziness, nausea, chest pain or any other physical symptoms. If in any doubt, consult your physician immediately.
- Children, disabled and handicapped persons should use the exercise only under supervision and in presence of another person who may give support and useful instructions.
- Be sure that your body parts and those of other persons are never close to any moving parts of the exerciser during its use
- When adjusting the adjustable parts, make sure they are adjusted properly and note the marked, maximum adjusting position, for example of the saddle support, and seat height post .
- Do not work out immediately after meals

Exploded drawing:



Checking list:



Part list:

Part No.	Description	Specification	Qty
1	Main frame		1
2	Left handlebar post		1
3	Right handlebar post		1
4	Handlebar set		1
5	Front handlebar set		1
6	Stabilizer		1
7	Computer supporting tube		1
8L	Lower cover for handlebar post(left)		1
8R	Lower cover for handlebar post(right)		1
9	Flat washer D15*D5.2*1.0T	D15*D5.2*1.0T	4
10	Allen bolt M10*1.5*65L	M10*1.5*65L	6
11	Cross bolt M5*0.8*15L	M5*0.8*15L	28
12	inner hexagon bolt	M8*1.25*35L	8
13	Wooden board	1445*695*25T	1
14	Buffer bar	25*2T*1380L	2
15	Metal clip	27*34*4T	18
16	Flat washer D12*D4.3*1.0T	D12*D4.3*1.0T	4
17	Running belt	600*4.3T*3500L	1
18	Allen bolt M8*1.25*35L	M8*1.25*35L	2
19	Pedaling plate welding set		1
20a	Pedaling plate		2
20b	Decorative strip for pedaling plate		2
21	Pedal cover		1
22	Buffer pedal pad		2
23	Cross screw ST4.2*15L	ST4.2*15L	69
24	Cross bolt M5*0.8*30L	M5*0.8*30L	6
25	Buffer 4 D30*37L*M8	D30*37L*M8	2
26	Buffer 3 D30*37L*M8	D30*37L*M8	2
27	Flat washer D16*D8.5*1.2T	D16*D8.5*1.2T	14
28	Anti-loose nut M8*1.25*8T	M8*1.25*8T	6
29	Allen bolt M8*1.25*20L	M8*1.25*20L	4
30	Rear roller set	D25*D100*686L	1
31	Inner hex head screw M10*1.5*80L	M10*1.5*80L	3
32L	Rear cover(left)		1
32R	Rear cover(right)		1
33	Buffer 1(red)		2
34	Nylon universal adjusting feet		2
35	Front roller set		1
36	Inner hex head screw	M10*1.5*45L	1
37	Multi-groove belt	270/PJ10	1
38	Motor	AC3.0HP	1
39	Anti-loose nutM10*1.5*10T	M10*1.5*10T	6
40	Flat washerD20*D11*2T	D20*D11*2T	12
41	Inner hex head screw M10*1.5*30L	M10*1.5*30L	4
42	Flat washerD28*D14*2T	D28*D14*2T	4

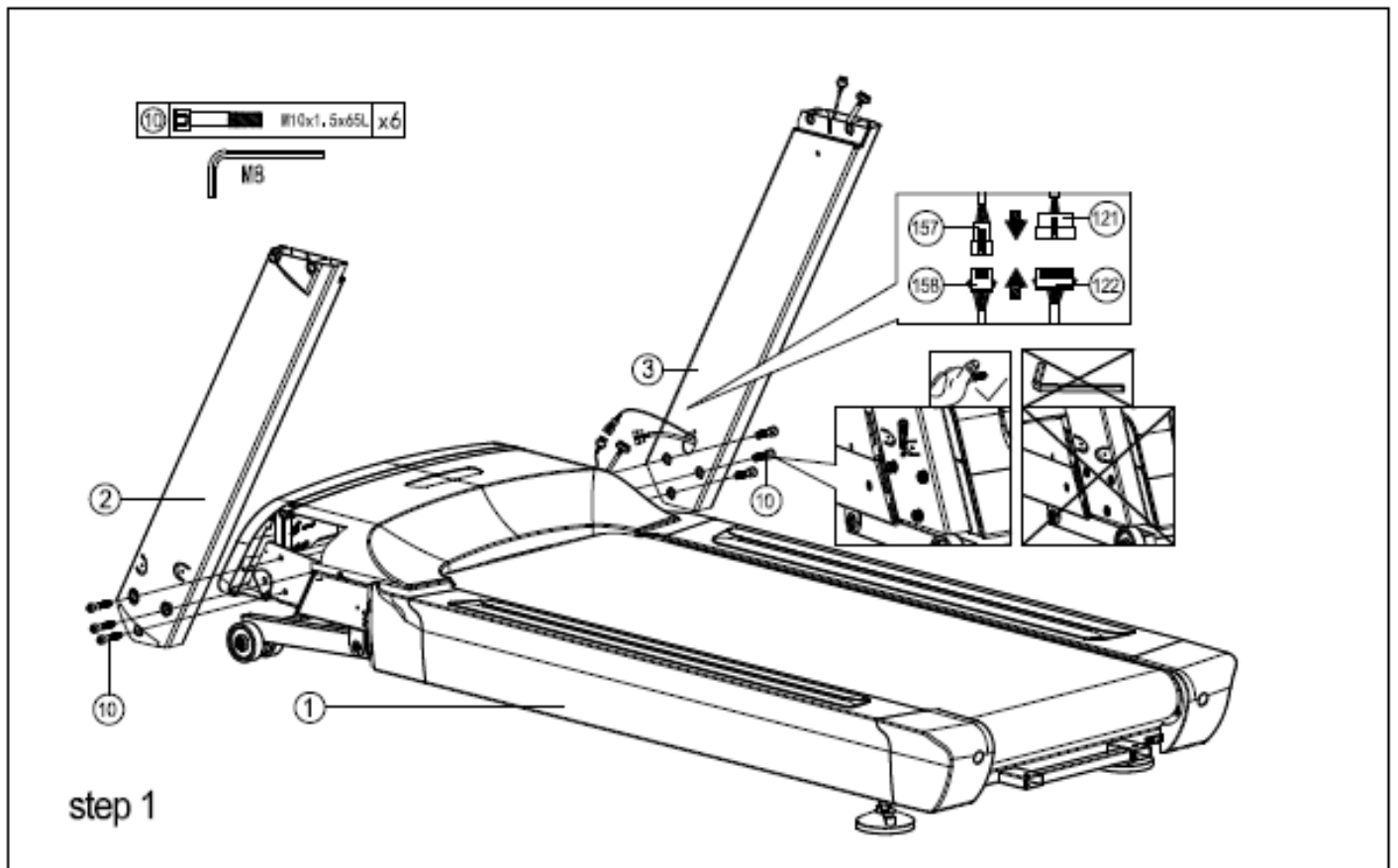
43	Insulating sleeve	D20*D10*8T	5
44	Motor buffer	65*40*5T	4
45	BoltM6*1*50L	M6*1*50L	4
46	Allen boltM8*1.25*60L	M8*1.25*60L	1
47	Fixing bracket for motor cover	32*18*18	4
48	Cable tie base	15*10	2
49	ScrewST4*1.41*15L	ST4*1.41*15L	2
50	Inner hex head screw M6*1.0*110L	M6*1.0*110L	10
51	Upper motor cover	800*454.8*129.5	1
52	Al plate with logo on motor cover		1
53	Socket		1
54	Cross screwST2.9x9.5L	ST2.9x9.5L	31
55	Power supplier board	130*45*6T	1
56	Switching mode power supplier		1
57	Buffer	D10.5*20L	4
58	Overcurrent protector	15A	1
59	Flat washerD12*D5.2*0.8T	D12*D5.2*0.8T	2
60	Anti-loose nutM5*0.8*5T	M5*0.8*5T	2
61	Lower motor cover		1
62	Inner hex head screw M10*1.5*50L	M10*1.5*50L	1
63	Plastic flat washer	D10*D24*0.4T	4
64	Incline	JS19-B	1
65	Inner hex head screw M10*1.5*65L	M10*1.5*65L	1
66	Moving wheel	D82*35L	4
67	Allen boltM8*1.25*20L	M8*1.25*20L	8
68	Flat washerD21*D8.5*1.5T	D21*D8.5*1.5T	4
69	Cap	25*50*14	4
70	Short axle	D18.7*41L	2
71	Nylon washer D21*D37*3T	D21*D37*3T	4
72	Flat washerD25xD8.5x2T	D25xD8.5x2T	4
73	Buffer D26*10*M8	D26*10*M8*1.25	2
74	Upper fixing plate for handle pulse	40*15.2	2
75	Allen boltM8*1.25*55L	M8*1.25*55L	1
76	Allen boltM8*1.25*50L	M8*1.25*50L	1
77	Handle pulse	100.3*29.5*0.4T	4
78	Lower fixing plate for handle pulse	40*15.2	2
79	ScrewST4x1.41x15L	ST4x1.41x15L	2
80	Handle grip	D30*3T*710L	1
81	Cross boltM5*0.8*10L	M5*0.8*10L	4
82	Lower computer cover	568.6*56*472.7	1
83	Upper computer cover	568.6*39.7*447.3	1
84	Computer	AC00551-56T-09 21.5 寸 TFT+CTP	1
85L	Left trigger	53.3*46.9*14.7	1
85R	Right trigger	53.3*46.9*14.7	1
86L	Sticker under left trigger	66.9*25.4	1
86R	Sticker under right trigger	66.9*25.4	1
87	Cross screwST4*1.41*12L	ST4*1.41*12L	10

88	Trigger base		2
89L	Connect cover L	191.8*195.6*181	1
89R	Connect cover R	191.8*195.6*181	1
90	Lower cable of trigger	900L,3P+PC250 2464 20#	2
91	Pin	D6*26.5*7.7	2
92	Inner hex head screw M6*1*20L	M6*1*20L	4
93	Handle pulse cable	1000L, 2pin+pc110*2	2
94	Buffer 2(blue)	D30*37L*M8	2
95	Emergency stop pin	21*18*1.5T	1
96	Safety key	78.6*35*18.2	1
97	Safety clip	830L	1
98	Cable for emergency stop function	450L	1
99	Strengthen tube for rear cover	20*40*2.0T*104	4
100	Inner case of safety key	39*15*13.3	2
101	screw M5*0.8*10L	M5*0.8*10L	7
102	Safety key base	74*45*7	1
103	Upper cover for handling tube	836*583*159.3	1
104	Lower cover for handling tube	836*356.8*193.7	1
105L	Side cover for handling tube(left)	416.3*46*153.3	1
105R	Side cover for handling tube(right)	416.3*46*153.3	1
106	Back cover for computer	442.6*41.7*362	1
107L	Left handlebar grips	448.7*126*71	1
107R	Right handlebar grips	448.7*126*71	1
109	Flat washerD15*D5.2*1.0T	D15*D5.2*1.0T	20
110	Grounding cable 1)	330L	1
111	Grounding cable 2)	300L	1
112	Live wire 1)	450L	1
113	Live wire 2)	60L	2
114	Neutral wire (1)	100L	1
115	Neutral wire (2)	450L	2
116	Magnet ring	D31*16	1
117	Motor decorative cover	702*40.8*50.1	1
118	Upper cable of trigger	550L, 7pin+7pin	1
119L	Inside cover for handrail (left)	416.3*42*153.3	1
119R	Inside cover for handrail (right)	416.3*42*153.3	1
120	Upper computer cable	850L, 10pin+10pin	1
121	Middle computer cable	10-1100	1
122	Lower computer cable	电 10P+3/2/6-500	1
123	Button plate	468*105.4*13.3	1
124	Filter	15A	1
125	Coil	15A	1
126	Electric cable	1700L	1
127	Screen pressing plate	327*250*13, 21.5 寸 TFT	1
128	Inner hex head screwM10*1.5*45L	M10*1.5*45L	4
129	Headphone jack	PC00521-01-K2	1
130	Bluetooth module	SI1015	1
131	Speaker cover		2
132	USB module	PA-AC00380-K2	1

133	CSK cross self-tapping screw	ST4*1.41*10L	4
134	Cross round-head self-tapping screw	ST2.3*8L	24
135	Button PCB board		1
136	Allen boltM8*1.25*60L	M8*1.25*60L	1
137	Inverter	RM6T6-2003E1	1
138	Power board	AC00520-25T-01-K7	1
139	Casing	D7*D5*3T	4
140	Power Board connection cable	8P 公+2/6-400L	1
141	Allen boltM8*1.25*15L	M8*1.25*15L	2
142	Inner hex head screwM8*1.25*20L	M8*1.25*20L	4
143	Spring WasherD15.4xD8.2x2T	D15.4xD8.2x2T	6
144	Left speaker	B00202050,4Ω 3W, 300L	2
145	Wireless charging cable	450L, 3pin	1
146L	Left cap	D40.7*51.1	1
146R	Right cap	D40.7*51.1	1
147L	Left pad of bottle	106.5*89.2*3T	1
147R	Right pad of bottle	106.5*89.2*3T	1
148	Wireless pulse receiver	JW-WS809	1
149	Wireless filling bracket welding group		1
150	Hex nut M8*1.25*6T	M8*1.25*6T	1
151	Spacer ring	D11.5*D8*3.5T	2
152	Adjust round wheel	D27*10L	2
153	Wireless top cover	220*125*27.8	1
154	Wireless underfill cover	220*125*34.5	1
155	Wireless charging module	D50*80L	1
156	Upper cable of LED light		1
157	Middle cable of LED light		1
158	Lower cable of LED light		1
159	LED light strap connecting plate	PA-AA01170-K5	1
160	PC spacer column	D5*D3.5*19.2	4
161	Light strap cable(1)		2
162	Light strap	LED7135CM	2
163	Cross screwST4*1.41*8L	ST4*1.41*8L	6
164	Cross round-head self-tapping screw ST2.3*8L	ST2.3*8L	4
174	Round end cap	D45*15	2
175	Screwdriver		1
190	Allen cross spanner	M6*130L	1
191	Allen spanner	M8*120L	1

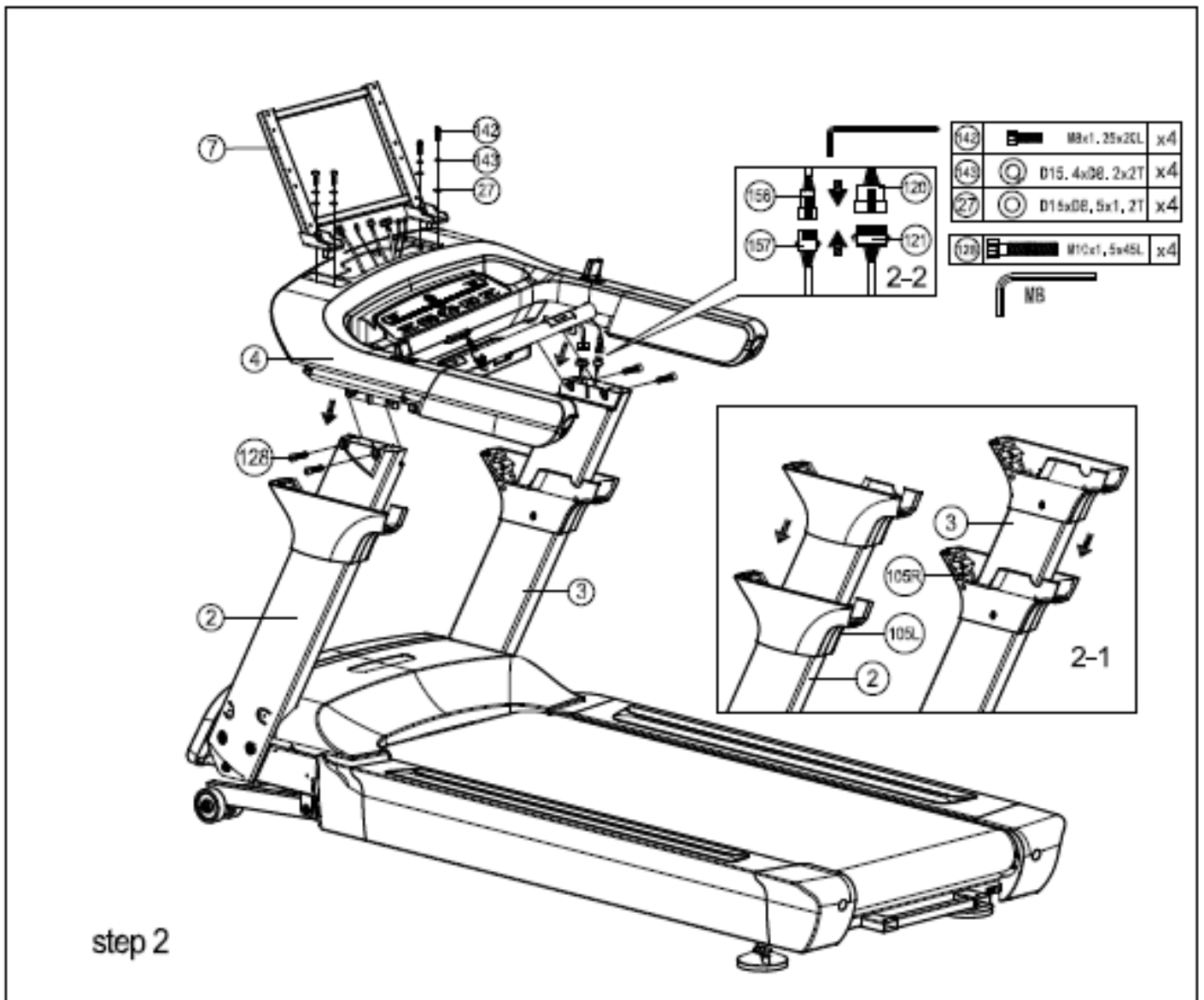
Assembly drawing:

Step 1



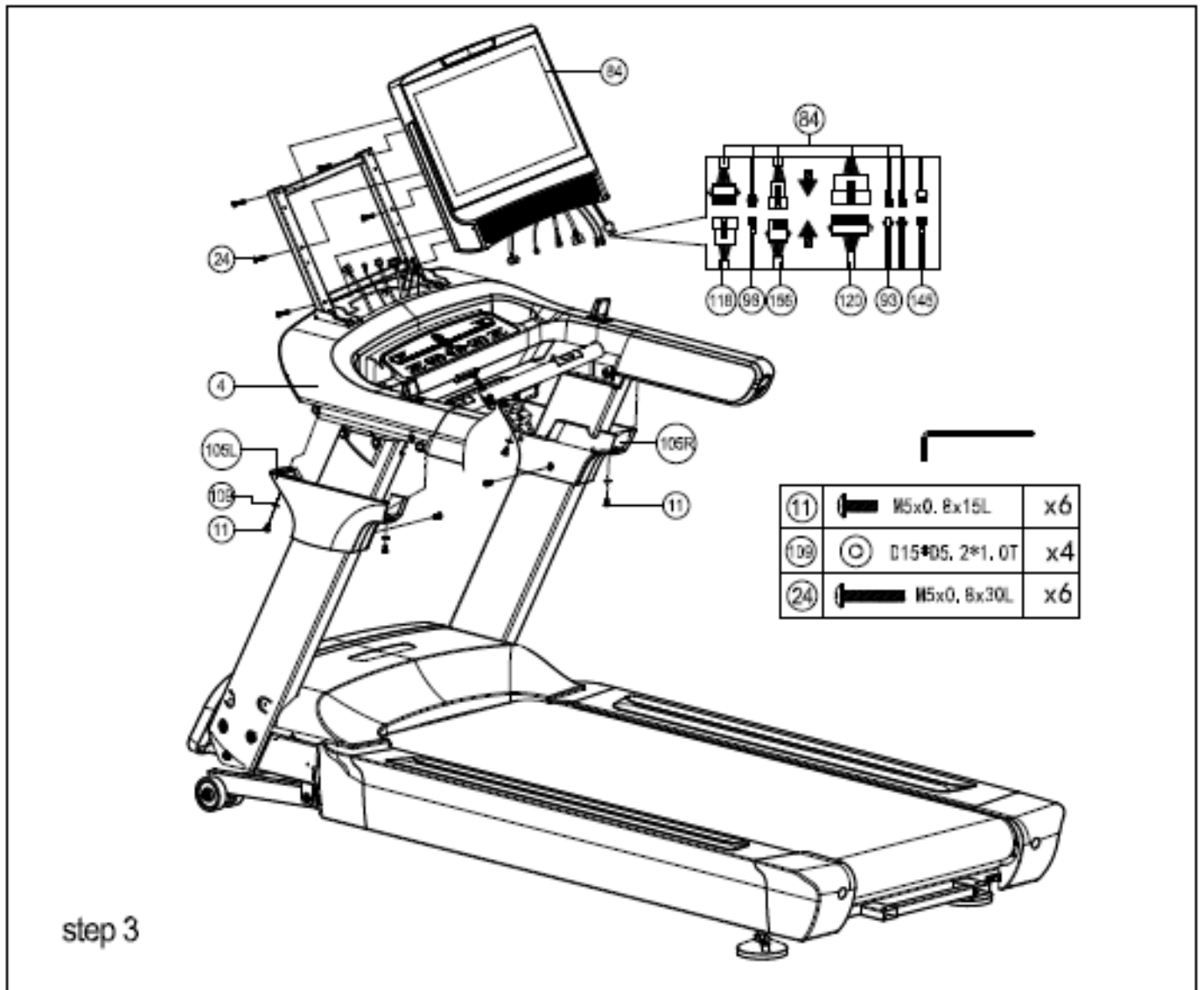
1. Assemble left & right handlebar post (2&3) onto main frame (1) using by allen bolt (10). Connect all the cables (157&158,121&122) like the drawing show.
2. Note: Lock bolts and washers, but not tighten them completely. It is easier to fix the handlebar on the step 2.

Step 2



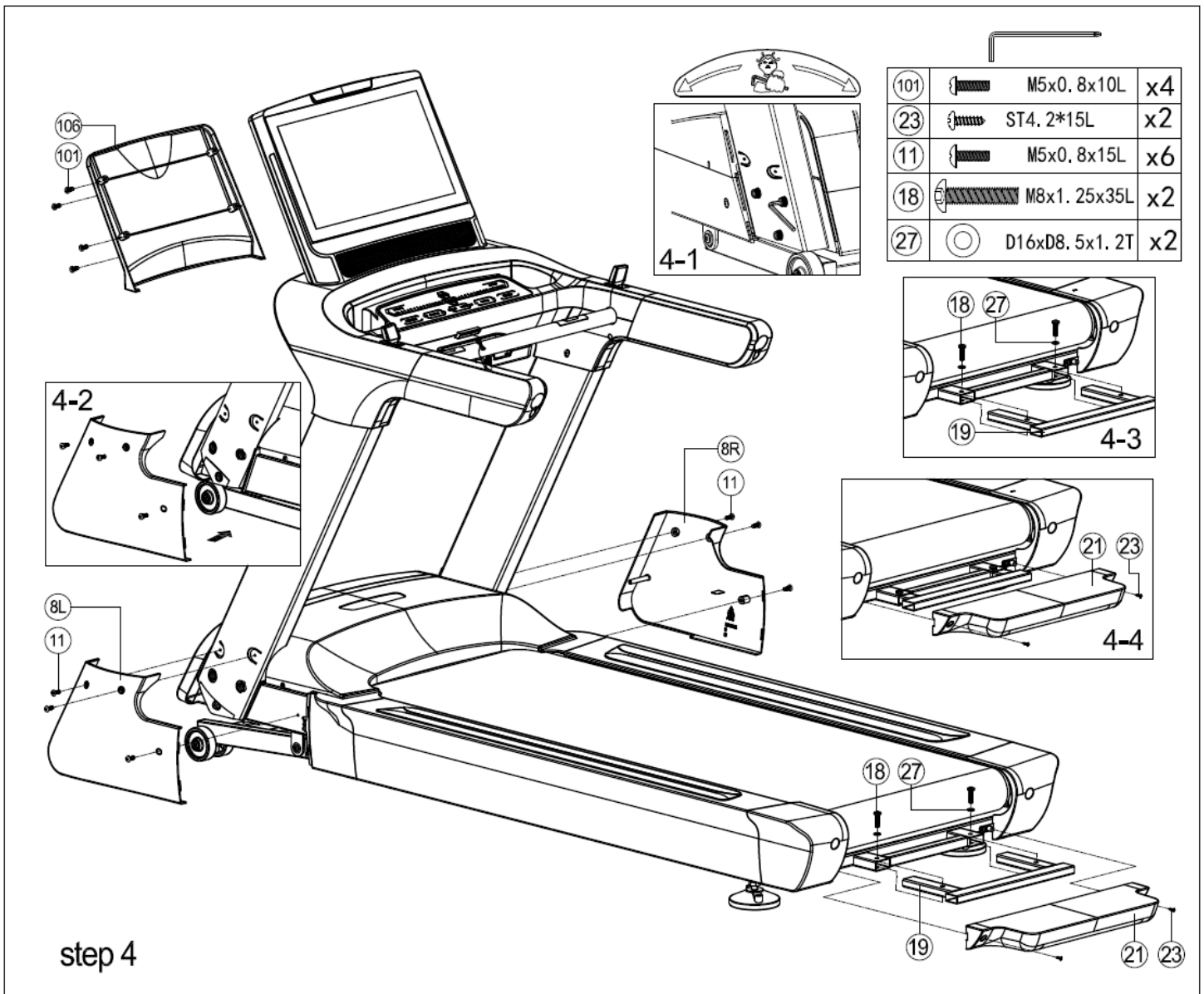
1. Through side cover (105L & 105R) onto left & handlebar post (2&3)) like the drawing show (2-1).
2. Connect the cables (156 & 157, 120 & 121) like drawing show (2-2).
3. Note: Fasten all of bolts and washers when handlebar and handlebar post at best fit position.

Step 3



1. Connect all the cables (118&98&156&120&93&145) and assemble the computer (84) onto the handlebar set (4). Tighten by screw(11), flat washer(109) and allen bolt (24) .

Step 4



1. Align all hole positions, assemble the left & right lower cover for handlebar post (8L&8R) onto the handlebar post and fasten them by cross bolt (11) as figure (4-1)(4-2).
2. Assemble the pedaling plate welding set (19) to main frame by allen bolt(18) and flat washer(27) as figure (4-3).
3. Assemble the pedal cover (21) to pedaling plate welding set (19) by cross screw (23) as figure (4-4).

You could adjust the running belt by clockwise before starting training.

